

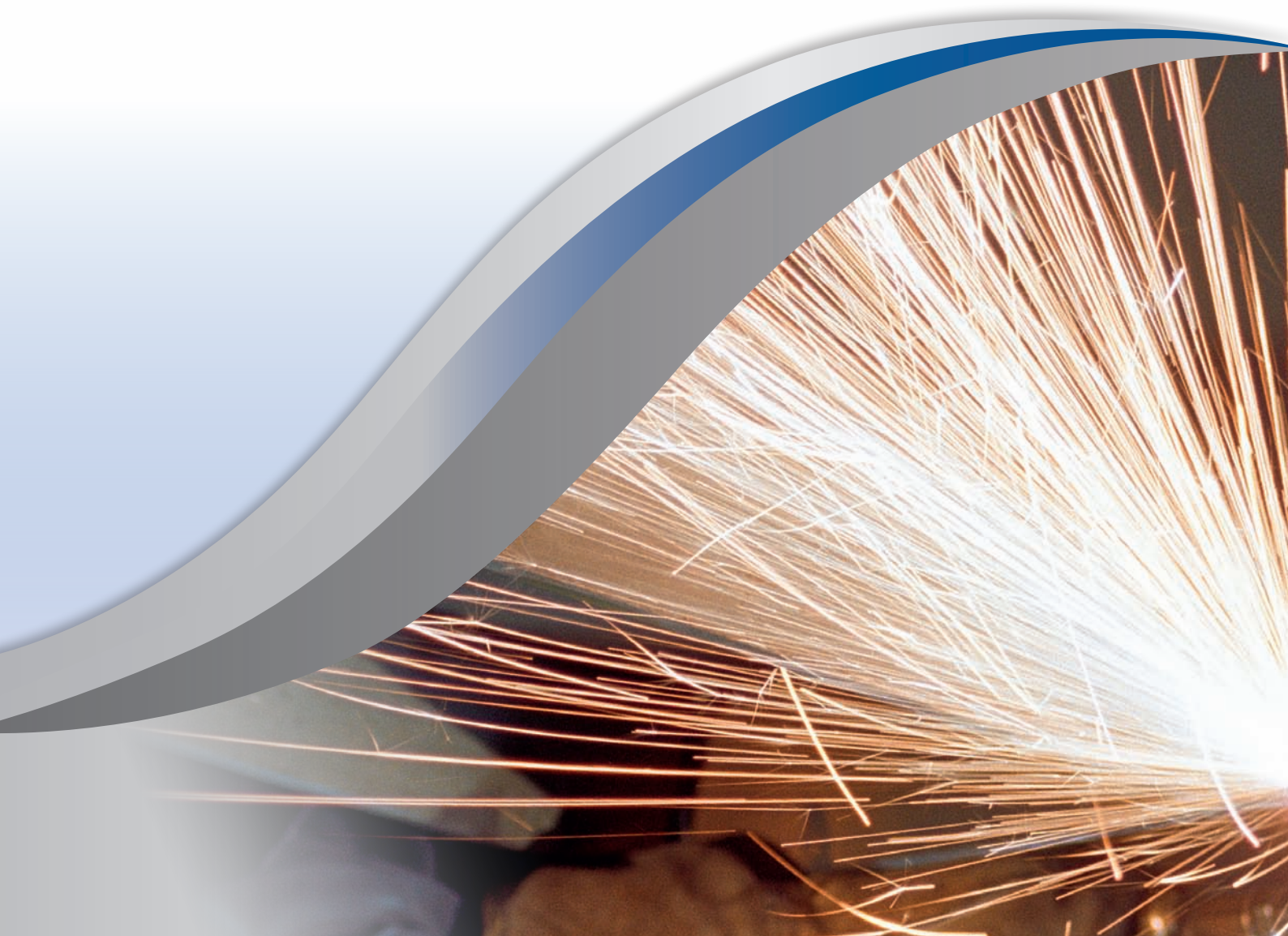


HUTA
BANKOWA



Product catalogue

Long products,
wheel tyres
and rings



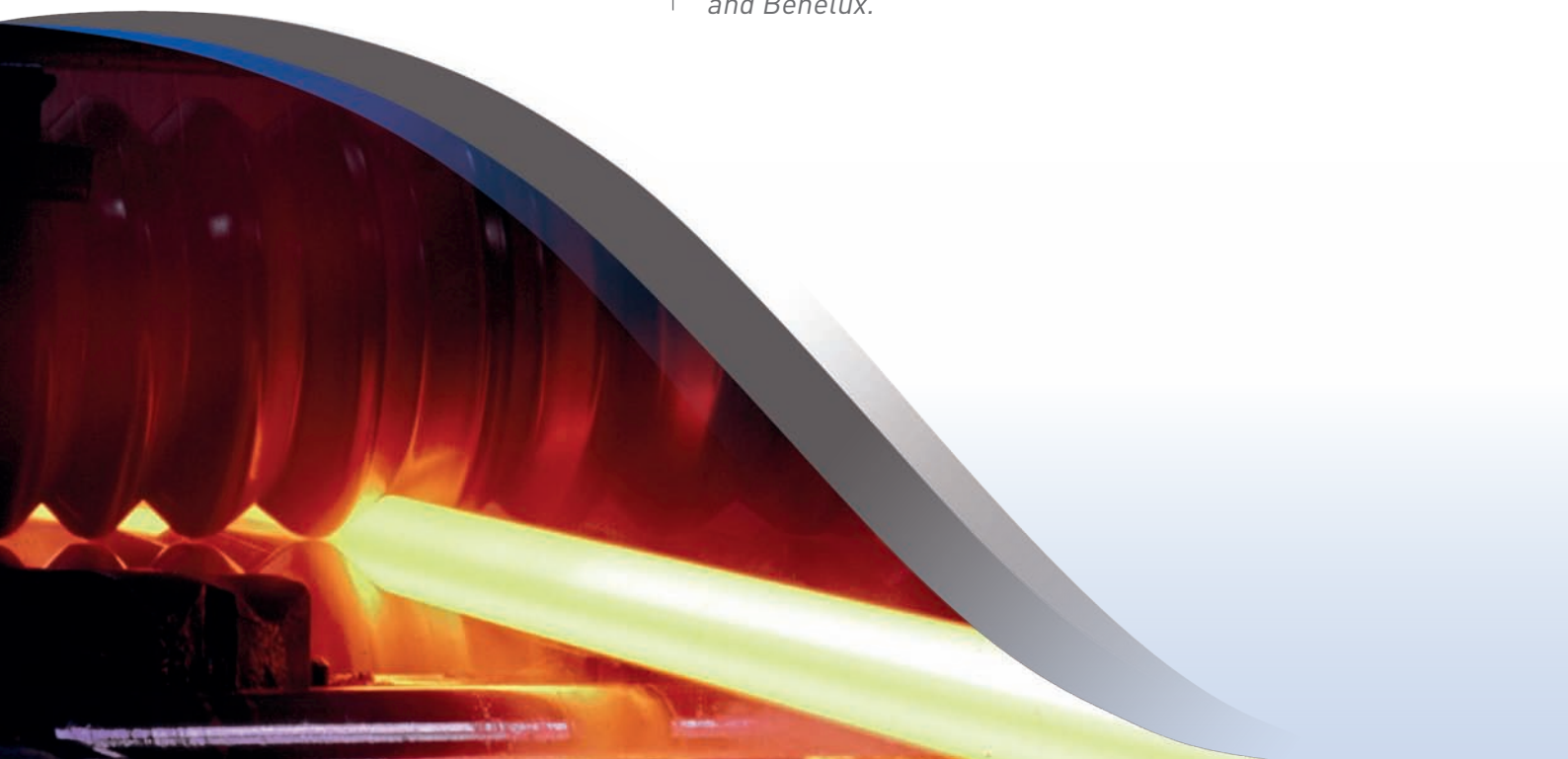
About the Company

Huta Bankowa is Poland's biggest producer of railway wheel tyres that are sold to Polish carriers as well as exported to Thailand, Russia and Ukraine. The company owns Poland's most modern ring and tyre rolling mill that allows us to continuously broaden our range, and the high flexibility of our production line allows producing many non-standard products in small batch, even in singles.

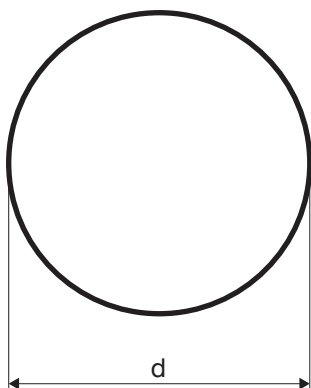
The company specializes in niche steel products, such as the above-mentioned tyres, rolled and forged rings as well as long products: round bars of diameters 90-250mm, 200x200mm equal-leg angles and bulb flats for shipbuilding. Huta Bankowa's long products are mainly used in machining as well as in water transport and construction industry. High quality steel angles are used in the construction of buildings, whereas the round bars are used in unusual architectural projects of public buildings (schools, banks) and underground tunnels in Scandinavia.

Huta Bankowa also offers a wide range of rolled billets for further processing as well as normalization and quenching and tempering services.

Over half of the steelworks' production is exported to e.g. Germany, Austria, Czech Republic, Scandinavia and Benelux.



Round bars



ROUND BARS ARE MANUFACTURED AS HOT-ROLLED OF THE FOLLOWING SIZES AND TOLERANCES:

Diameter	Tolerances of the Diameter	Length	Weight
d (mm)	EN 10060	L(m)	1 mb/kg
90	±1,3	3÷12 m or other dimensions within the range, tolerance of cutting +100/-0 mm	49,9
95			55,6
100			61,7
105	±1,5		68,0
110			74,6
115			81,5
120	±2,0		88,8
125			96,3
130			104
135			112
140			121
145			130
150			139
155	±2,5		148
160			158
165			168
170			178
175			189
180			200
190	±3,0	3÷6	223
200			247
210			272
225			312
230			326
250			385

MANUFACTURING SPECIFICATIONS

according to PN-H-93000:1984 – bars of common quality steel

according to PN-H-93001:1985 – bars of quality steel

according to EN standard

STRAIGHTNESS

Straightness deviation max. 0,25% of measured length

SPECIFICATIONS OF THE DELIVERY

Round bars are delivered as rolled, normalised, soft annealed, quenched and tempered.

PACKAGING

Round bars are delivered loose or in bundles of max. 3.5 ton weight.

Round bars

ACCEPTANCE TESTS

Acceptance tests are performed according to conditions determined by Huta Bankowa's Quality Control Service or external representatives of Classifying Associations determined by the Customer. The test results are confirmed in the Certifications according to the EN 10204 Standard, items 2.2; 3.1; 3.2.

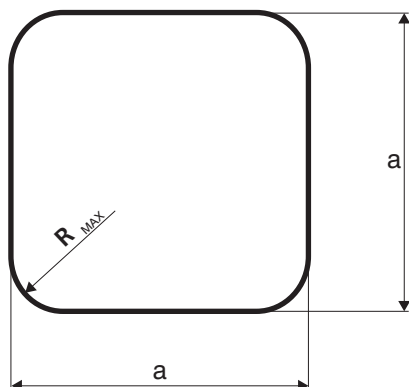
GRADES OF STEEL

Round bars are manufactured of carbon and alloy steel according to the EN 10025; EN 10083; EN 10084; EN 10273, DIN 17243 or other steel standards agreed while ordering. Grades of steel – see table below.

STEEL STANDARDS

No.	Standard No.	Grades of Steel
1	EN 10025-2	E295; E335; E360; S235JR; S235J0; S235J2; S275JR; S275J0; S275J2; S355JR; S355J0; S355J2; S355K2
2	EN 10025-3	S275N; S355N
3	EN 10083-1	C22E; C35E; C45E; C55E; 34CrNi C60E; 41Cr4; 34CrMo4; 42CrMo4; Mo6
4	EN 10084	C10E; C15E; 16MnCr5; 20MnCr5
5	PN-EN 10273	P235GH; P250GH; P265GH; P295GH; P355GH; 16Mo3
6	DIN 2528	C21
7	DIN 17243	C22.8
8	PN-H-84023/07:1989	R35; R45
9	PN-H-84024:1975	K10, K18
10	DIN 1629 (Acceptance of TÜV Hannover)	St37.0, St44.0; St52.0
11	DIN 17175 (Acceptance of TÜV Hannover)	St35.8, St45.8
12	PN-H-93011/96	35, 28Mn6; 30G2F; 34CrMo4
13	VdTÜV 311-12-89 VdTÜV 342-06-96	34CrMo4
14	PN-H-92147:1993 Acceptance regulations of maritime associations: PRS, LRS, GL, DNV, BV, ABS, RINA	A; B; AH32; AH36; DH32; DH36

Square billets



SQUARE BILLETS ARE MANUFACTURED AS HOT-ROLLED OF THE FOLLOWING SIZES AND TOLERANCES

<i>Side of the square</i>	<i>Tolerance of the square's side</i>	<i>Radius</i>	<i>Length</i>	<i>Weight</i>
a (mm)	A (mm)	R _{max} (mm)	L(m)	1 mb/kg
80	+2,0/-3,0	12	2÷8*m or other dimensions within the range, tolerance of cutting +100/-0 mm	49,3
90				62,6
100	+2,5/-3,5	15		77,0
110				93,0
120		18		111,0
130	+3,0/-4,0	21		124,2
140				151,0

* fixed length with tolerance +100/-0 mm can be offer after agreement

Side of the square	MAX. DIMENSIONAL DEVIATION		Length	
	Standard accuracy of production	Increased accuracy of production		
a (mm)	mm	mm	m	
140	+/-5	+/-3,5	2-6*	
150				
160				
170				
180				
190	+1-6	+1-4		
200		+/-4,5		
220				
240	+1-7	+/-5		
260	+1-8	+/-6		
280				
300				

* Corner radius – resulting from barrel type rolling.

MANUFACTURING SPECIFICATIONS

according to PN-H-93020: 1981 – dimensions

according to PN-H-93021: 1989 – die forging

according to PN-H-93022: 1989 – rolling and forging

according to PN-H-93000: 1984 – common quality steel for machining

according to PN-H-93001: 1985 – according to quality steel for machining according to EN standard

Square billets

STRAIGHTNESS

Straightness tolerance max. 2% of the measured length

SPECIFICATIONS OF THE DELIVERY

Billets are delivered as rolled, soft annealed or normalised.

PACKAGING

Billets are delivered loose or in bundles of max. 3.5 ton weight

ACCEPTANCE TESTS

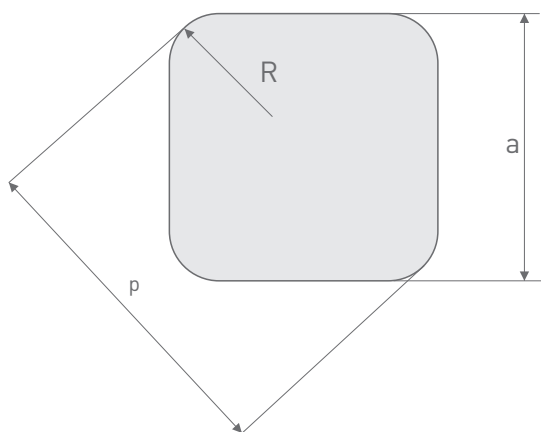
Acceptance tests are performed according to conditions determined by Huta Bankowa's Quality Control Service or external representatives of Classifying Associations determined by the Customer. The test results are confirmed in the Certifications according to the EN 10204 Standard, items 2.2; 3.1; 3.2.

GRADES OF STEEL

Square billets are manufactured of carbon and alloy steel according to the EN 10025; EN 10083; EN 10084; EN 10273 or/and other agreed steel standards while ordering. Grades of steel – see table below.

No.	Standard No.	Grades of Steel
1	EN 10025-2	E295; E335; E360; S235JR; S235J0; S235J2; S275JR; S275J0; S275J2; S355JR; S355J0; S355J2; S355K2
2	EN 10025-3	S275N; S355N
3	EN 10083-1	C22E; C35E; C45E; C55E; 34CrNi C60E; 41Cr4; 34CrMo4; 42CrMo4; Mo6
4	EN 10084	C10E; C15E; 16MnCr5; 20MnCr5
5	PN-EN 10273	P235GH; P250GH; P265GH; P295GH; P355GH; 16Mo3
6	DIN 2528	C21
7	DIN 17243	C22.8
8	PN-H-84023/07:1989	R35; R45
9	PN-H-84024:1975	K10, K18
10	DIN 1629 (Acceptance of TÜV Hannover)	St37.0, St44.0; St52.0
11	DIN 17175 (Acceptance of TÜV Hannover)	St35.8, St45.8
12	PN-H-93011/96	35, 28Mn6; 30G2F; 34CrMo4
13	VdTÜV 311-12-89 VdTÜV 342-06-96	34CrMo4
14	PN-H-92147:1993 Acceptance regulations of maritime associations: PRS, LRS, GL, DNV, BV, ABS, RINA	A; B; AH32; AH36; DH32; DH36

Square rods for gas bottles



SQUARE RODS ARE MANUFACTURED AS HOT-ROLLED OF THE FOLLOWING SIZES AND TOLERANCES:

Side of the square	Diagonal	Max. difference between diagonal	Radius
a (mm)	p (mm)	(mm)	R (mm)
130	166 +2/-3	5	>20
150	193,9 +3/-3	5	>22
200	247 +3/-4	6	>30

MANUFACTURING SPECIFICATIONS

According to PN-H-93011:1996

According to VdTÜV-Werkstoffblatt 311-12.89

According to VdTÜV-Werkstoffblatt 342-06.96

STRAIGHTNESS

Non-straightened rods: permissible deviation 10 mm/m.

SPECIFICATIONS OF THE DELIVERY

Square rods are delivered as rolled or soft annealed.

PACKAGING

Square rods are delivered as loose (no package).

Square rods for gas bottles

ACCEPTANCE TESTS

Acceptance tests are performed according to PN-H-93011:1996 and VdTÜV-Werkstoffblatt 311-12.89 and 342-06.96 standards.

The test results are confirmed in the Certifications according to the EN 10204 Standard, items 3.1; 3.2.

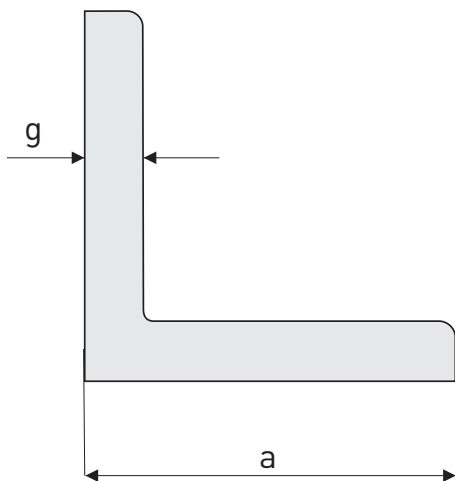
GRADES OF STEEL

Square rods for gas bottles are manufactured of carbon and alloy steel specified in PN-H-93011:1996 Standard as well as VdTÜV-Werkstoffblatt 311 and VdTÜV-Werkstoffblatt 342. Grades of steel as per table below.

No.	Standard No.	Grades of Steel
1	PN-H-93011/96	35, 28Mn6; 30G2F; 34CrMo4
2	VdTÜV 311-12-89 VdTÜV 342-06-96	34CrMo4



Angles



ANGLES ARE MANUFACTURED AS HOT-ROLLED OF THE FOLLOWING SIZES AND TOLERANCES:

Notation	Length	Weight
(mm)	L(m)	1 mb (kg)
200x200x16,18, 20	3÷12 or other dimensions within the range, tolerance of cutting +100/-0 mm	48.5, 54.3, 59.9

MANUFACTURING SPECIFICATIONS

according to PN-H-93010:1991

according to EN-10163-3

according to EN-10056-1 – 2 dimensions and tolerances

STRAIGHTNESS

Straightness deviation max. 0,2% of measured length

SPECIFICATIONS OF THE DELIVERY

Angles are delivered as rolled.

PACKAGING

Angles are delivered in bundles of max 3,5 ton weight.

ACCEPTANCE TESTS

Acceptance tests are performed according to conditions stipulated in appropriate standards, as determined by Huta Bankowa Company's Quality Control Service and UDT and/or to regulations of the maritime quality organizations such as: PRS, LRS, GL, DNV, BV, RINA.

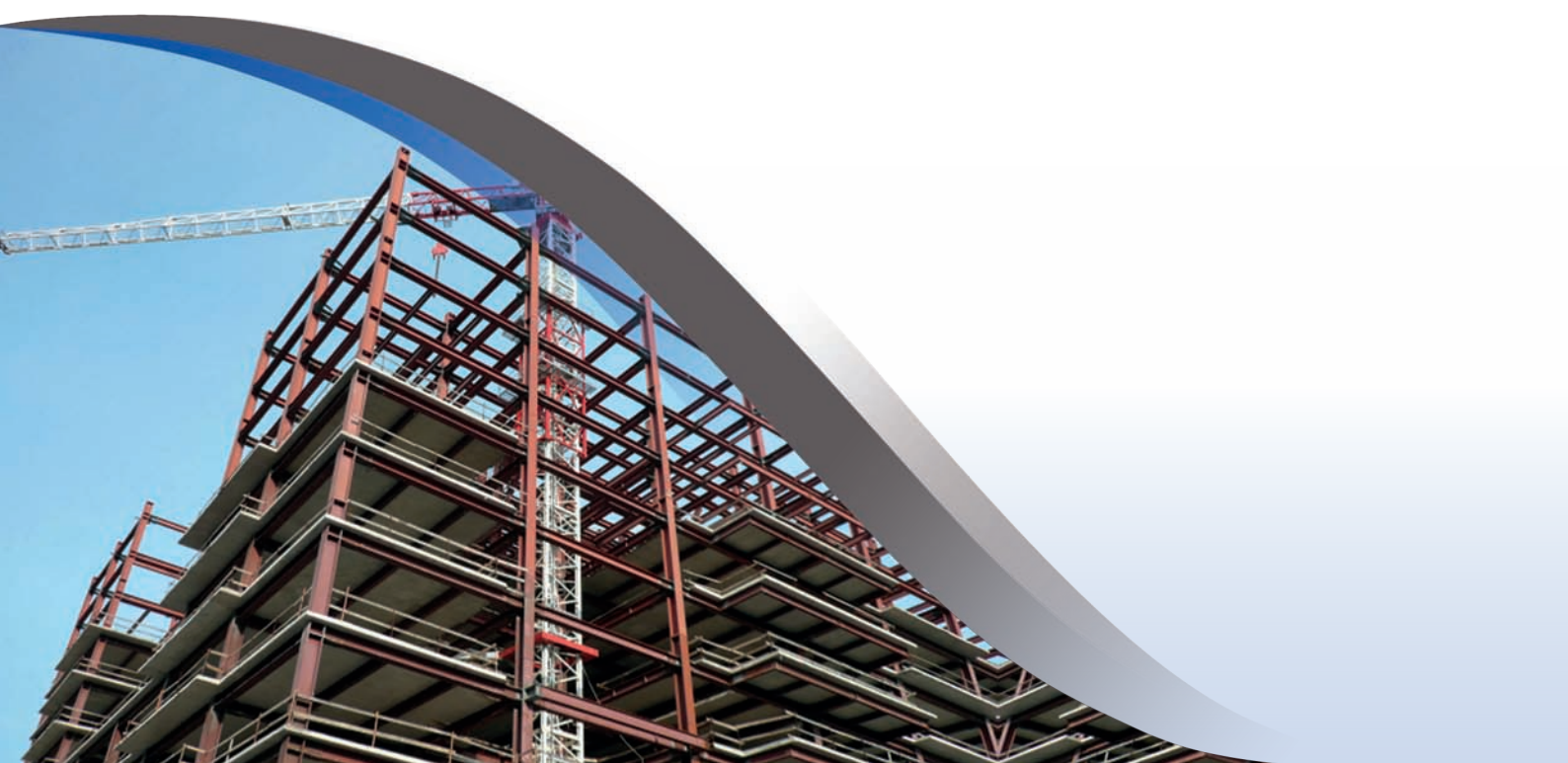
The test results are confirmed in the Certifications according to Standard, items 3.1; 3.2.

Angles

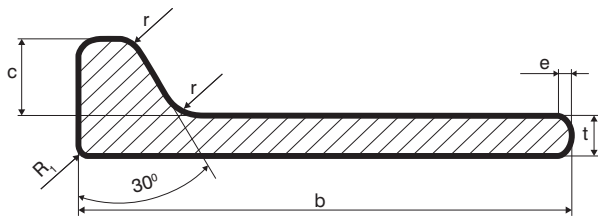
GRADES OF STEEL

Angles are manufactured of carbon steel according to the EN 10025. Grades of steel table below.

No.	Standard No.	Grades of Steel
1	EN 10025-2	E295; E335; E360; S235JR; S235J0; S235J2; S275JR; S275J0; S275J2; S355JR; S355J0; S355J2; S355K2
2	PN-H-92147:1993 Acceptance regulations of maritime associations: PRS, LRS, GL, DNV, BV, ABS, RINA	A; B; AH32; AH36; DH32; DH36



Bulb flats



BULB FLATS ARE MANUFACTURED AS HOT-ROLLED OF THE FOLLOWING SIZES AND TOLERANCES:

ACCORDING TO EN 10067

Notation	Dimensions				Tolerances	
(mm)	b (mm)	t (mm)	c (mm)	r (mm)	b (mm)	t (mm)
HP 220x10, 11,5, 12	220	10, 11, 12	31	9	±3.0	+1.0 -0.4
HP 240x10, 11, 12	240	10, 11, 12	34	10		
HP 260x10, 11, 12	260	10, 11, 12	37	11		
HP 280x11, 12, 13	280	11, 12, 13	40	12		
HP 300x11, 12, 13	300	11, 12, 13	43	13		

R₁ = 2 ÷ 7 mm e = max.4 mm – as per the Huta Bankowa Ltd Technical Specifications

MANUFACTURING SPECIFICATIONS

according to PN-H-92147: 1993

according to EN 10067

and/or according to quality organizations

STRAIGHTNESS

Straightness tolerance: max 0,0035 of measured length.

SPECIFICATIONS OF THE DELIVERY

Bulb flats are delivered as rolled.

PACKAGING

Bulb flats are delivered in bundles of max. 3.5 ton weight.

Bulb flats

ACCEPTANCE TESTS

Acceptance tests are performed according to specifications as determined by Huta Bankowa Company's Quality Control Service, MK, and/or according to regulations of the marine quality organizations such as: PRS, LRS, GL, DNV, BV, RINA. The test results are confirmed in the Certifications according to the EN 10204 Standard, items 3.1; 3.2.

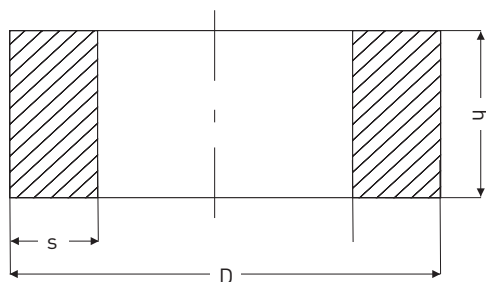
GRADES OF STEEL

Bulb flats are manufactured of carbon steel according to the PN-93/H-92147:1993 Standard and marine qualification regulations of PRS, LRS, GL, DNV, BV, ABS, RMRS. Grades of steel table below.

No.	Standard No.	Grades of Steel
1	PN-H-92147:1993 Acceptance regulations of maritime associations: PRS, LRS, GL, DNV, BV, ABS, RINA	A; B; AH32; AH36; DH32; DH36



Rolled rings



PROFILE CONTOUR:

rectangular, square

DIMENSIONS:

Outer diameter (D):	280 ÷ 3600 mm
Height (h):	35 ÷ 560 mm
Wall thickness (s):	30 ÷ 400 mm
Minimal unit weight:	1000 kgs
Maximal unit weight:	2500 kgs

Rings of outer diameter over 2400 mm, height 400 mm and weight below 100 kg or above 2000 kg should be agreed while ordering.

MANUFACTURING SPECIFICATIONS

according to PN-H-94004:1984 – forgings for general purposes
according to PN-H-94009:1992 – forgings for pressure equipment
according to PN-H-94023: 2000 – rolled rings from non-alloy and alloy steels
according to EN 10222 – (1÷2) forgings for pressure equipment
according to EN 10250 – (1÷4) forgings for general purposes

SPECIFICATIONS OF THE DELIVERY

Rings are delivered as: rolled, soft annealed, normalised, quenched and tempered or supersaturated.

ACCEPTANCE TESTS

Acceptance tests are performed according to specifications of appropriate standards, as determined by the Huta Bankowa Company's Quality Control Service, UDT, TÜV, PRS, LRS, GL, DNV, BV, ABS.

ULTRASONIC TESTS

according to SEP 1921– BN-86/0601-09/ PN-EN10228-3

APPROVALS

Huta Bankowa holds an approval for rings manufacture issued by TÜV Nord, UDT, PRS and BV, RS.

MACHINING

Rings are delivered as rolled, roughly machined or machined upon an agreement of manufacturing specifications.

Rolled rings

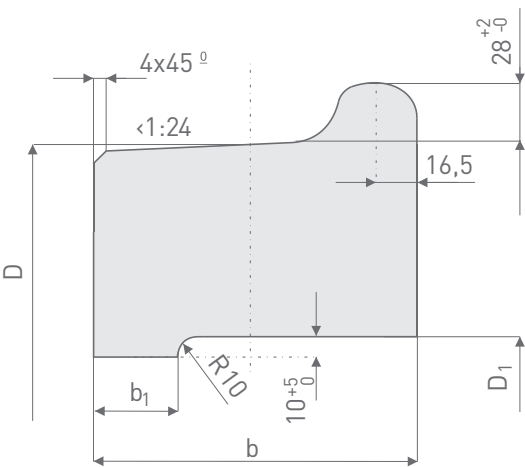
GRADES OF STEEL

Rings are manufactured of carbon and alloy steel according to Polish and foreign standards agreed while ordering. Grades of steel – see table below.

No.	Standard No.	Grades of Steel
1	PN-H-84030:1989	16HG; 30G2; 40H; 40HM; 45HN; 25HM
2	PN-H-84032:1974	65; 50HF
3	PN-H-84035:1972	20H2N4A
4	PN-H-94021:1997	ŁH15SG, ŁH20M
5	EN 10025	S235JRG2; S275JR; S355JO; S355J2G3; S355J2G4
6	EN 10028-2	P235GH; P265GH; P295GH; P355GH; 16Mo3
7	EN 10028-6	P460QH
8	EN 10113-2	S355NL
9	EN 10222-2	P245GH; P280GH; P305GH
10	EN 10222-4	P355QH1; P355NH
11	EN 10083	41Cr4; 42CrMo4; 34CrNiMo6; C45; C60
12	EN 10088-1	X10Cr13; X2CrNi19-11; X2CrNiMo17-12-2; X6CrNiMoTi17-12-2
13	ASTMA182	304L; 316L
14	DIN 17230	100Cr6
15	DIN 17243	C22.8
16	ASTMA105	A105
17	EN 10273	P250GH



Railway wheel tyres



ROUGH WHEEL TYRES FOR WHEEL SETS OF RAILWAY ROLLING STOCK ARE MANUFACTURED AS FORGED AND ROLLED OF THE FOLLOWING SIZES AND TOLERANCES: ACC. PN-91/K-91032

Size	D	D ₁	b*	b ₁	Weight
(mm)	(mm)	(mm)	(mm)	(mm)	1 pcs (kg)
850	855	690	139	40	265
920	925	760			295
940	945	800			265
960	965	800			310
1000	1005	840	144	30	320
1040	1045	880			330
1100	1105	940			360
1250	1255	1090			415

*tolerance of the wheel tyres width at a marking place: ≤ 5 mm
other sizes and tolerances to be agreed while ordering

MANUFACTURING SPECIFICATIONS

- according to PN-K-91032: 1991 – dimensions and measurements
- according to PN-K-91042: 1993 – requirements and testing
- according to PN-H-84027-06: 1984 – steel grades
- according to UIC 810-1 – requirements and testing
- according to UIC 810-2 – tolerances of dimensions
- according to BS 5892 cz.4/1992 – manufacturing and testing
- according to GOST 398 – requirements and testing
- according to DSTU 3717-98 – dimensions and measurements
- according to GOST R 52366-2005 – dimensions and measurements
- according to GOST 5000-83 – dimensions and measurements

Railway wheel tyres

SPECIFICATIONS OF THE DELIVERY

Rough wheel tyres are delivered as normalised or quenched and tempered condition.

PACKAGING

Wheel tyres are delivered loose (no package), packed in bundles of 3-4 pcs. or on pallets on agreed means of transport.

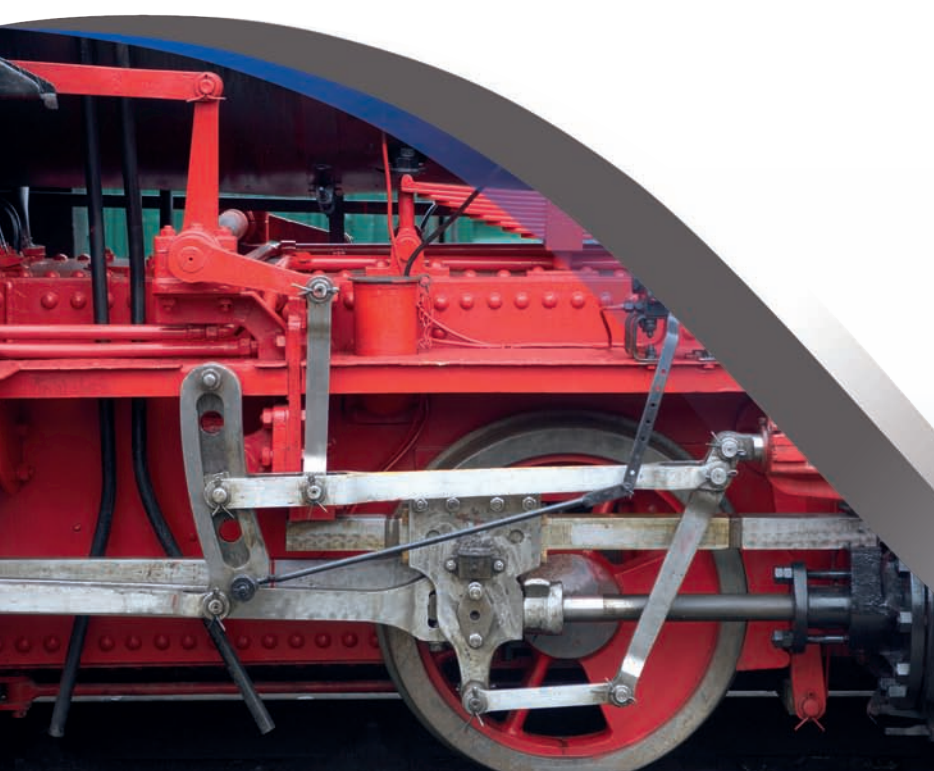
ACCEPTANCE TESTS

Acceptance tests are performed according to specifications of appropriate standards, determined by Huta Bankowa Company's Quality Control Service, and/or indicated by the Customer. The test results are confirmed in the Certifications according to the EN 10204 Standard, items 3.1; 3.2.

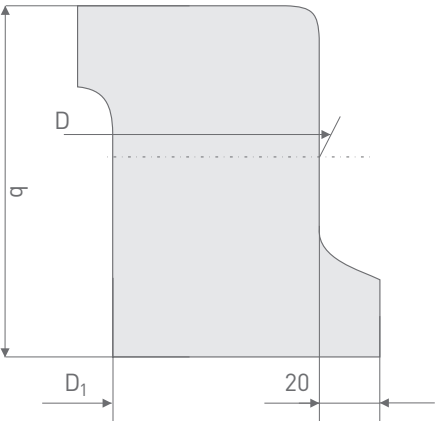
GRADES OF STEEL

No.	Standard	Grades of steel
1	PN-H-84027-6:1984	P54, P55A, P60
2	UIC 810-1	B1÷B6
3	BS 5892 cz.4/92 r.	B1÷B7
4	GOST 398-96	2;3

other grades to be agreed while ordering



Tramway tyres



ROUGH TRAMWAY TYRES FOR TRAM WHEEL SETS ARE MANUFACTURED AS FORGED AND ROLLED OF THE FOLLOWING SIZES AND TOLERANCES:

Outer Diameter <i>D</i>		Inside Diameter <i>D₁</i>		Width <i>b</i>	
Scope	Tolerance	Scope	Tolerance	Scope	Tolerance
400-750	+14 -4	270-600	+4 -8	90-124	±3

Other dimensions and tolerances to be agreed while ordering.

MANUFACTURING SPECIFICATIONS

*according to BN-91/3554-06
according to UIC 810-1 wyd. V*

SPECIFICATIONS OF THE DELIVERY

Rough tyres are delivered as quenched and tempered.

PACKAGING

Tyres are delivered loose, in bundles or on pallets on agreed means of transport.

Tramway tyres

ACCEPTANCE TESTS

Acceptance tests are performed according to conditions inclited in appropriate standards determined by the Huta Bankowa's Quality Control Service or external representatives of Classifying Associations determinated by the Customer. The test results are confirmed in the Certifications according to the EN 10204 Standard, items 3.1; 3.2.

GRADES OF STEEL

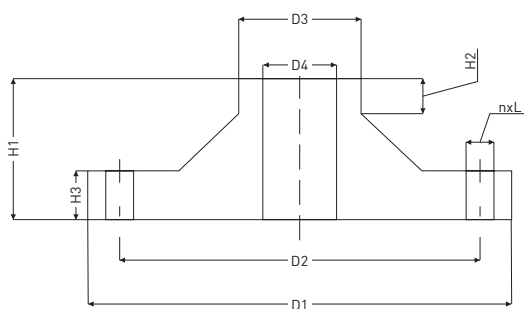
No	Standard	Grades of steel
1	PN-H-84027-6:1984	P60, P70
2	UIC 810-1	B1 ÷ B6
3	BS 5892 cz. 4/92 r.	B1 ÷ B7

other grades to be agreed while ordering

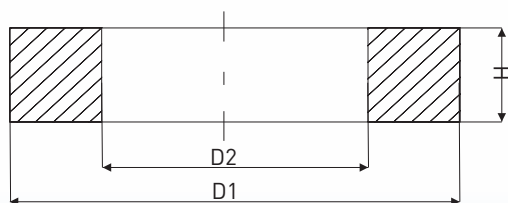


STEEL FLANGES

Neck flanges



Flat flanges



MANUFACTURING SPECIFICATIONS

PN-EN 1092-1 Flanges and fittings. Round flanges for tubes, fittings, connectors with PN marking.

PN-ISO 7005-1 Steel flanges

PN-H-74710-02÷08:1987 Neck flanges for welding for nominal pressure 0,63; 1; 1,6; 2,5; 4; 6,3; 10 MPa

PN-H-74731:1987 Fittings and pipelines. Flat flanges for welding for nominal pressure 0,25-1,6 MPa

PN-H-74738:1988 – Fittings and pipelines. Slack flanges with neck rings for welding for nominal pressure 0,25-10 MPa

ANSI and DIN Standards

SPECIFICATIONS OF THE DELIVERY

Flanges are delivered as: rolled, soft annealed, normalised.

ACCEPTANCE TESTS

Acceptance tests are performed according to conditions included in appropriate standards determined by the Huta Bankowa's Quality Control Service or external representatives of Classifying Associations determined by the Customer. The test results are confirmed in the Certifications according to the EN 10204 Standard, items, 3.1; 3.2.

ULTRASONIC TESTS

according to SEP 1921 EN 10228-3

Flat flanges

MACHINING

Flanges are delivered as: roughly machined or machined upon an agreement of manufacturing specifications.

GRADES OF STEEL

Flanges are manufactured of carbon and alloy steel according to Polish and foreign standards agreed while ordering. Grades of steel – see table below.

No.	Standard No.	Grades of Steel
1	PN-H-84030:1989	16HG; 30G2; 40H; 40HM; 45HN; 25HM
2	PN-H-84032:1974	65; 50HF
3	PN-H-84035:1972	20H2N4A
4	PN-H-94021:1997	ŁH15SG, ŁH20M
5	EN 10025	S235JRG2; S275JR; S355JO; S355J2G3; S355J2G4
6	EN 10028-2	P235GH; P265GH; P295GH; P355GH; 16Mo3
7	EN 10028-6	P460QH
8	EN 10113-2	S355NL
9	EN 10222-2	P245GH; P280GH; P305GH
10	EN 10222-4	P355QH1; P355NH
11	EN 10083	41Cr4; 42CrMo4; 34CrNiMo6; C45; C60
12	EN 10088-1	X10Cr13; X2CrNi19-11; X2CrNiMo17-12-2; X6CrNiMoTi17-12-2
13	ASTMA182	304L; 316L
14	DIN 17230	100Cr6
15	DIN 17243	C22.8
16	ASTMA105	A105
17	EN 10273	P250GH



Approvals of classifying associations scope

LLOYD'S REGISTER OF SHIPPING

Sections for ship-building applications, steel grade A, B, AH27S, DH27S, AH32, AH36, DH32, DH36 up to thickness max. 20 mm
Round bars in grade A, carbon steel, carbon-manganese, as-rolled and normalized quenched and tempered up to max. 250 mm with minimum reduction ratio 6:1
Bars for anchor chains, up to 160 mm dia, U1, U2 grade of steel

GERMANISCHER LLOYD

Round bars and bulb flats steel grades GL-AS to GL-ES and GL-A32S to GL-E36
Round bars for anchor chains, of GL-K2 grade
Hot rolled round bars up to 250 mm dia, from carbon, manganese-carbon or alloy steel acc. to EN 10025-2, EN 10083-2 and -3, EN 10084

DET NORSKE VERITAS

Sections for shipbuilding up to 30 mm max. thickness, NVA, 13 mm in grade: NVB, 20 mm, NVA32, NVD32, NVA36, NVD36
Round bars up to 200 mm dia, NVA grade

BUREAU VERITAS

Hot rolled sections and bars of A, AH32, AH36 grade
Hot rolled round bars for Diesel motor stays
Hot rolled round bars for anchor chain applications
Hot forged/rolled steel rings for general applications
Grades of steel acc. to BV rules and/or legal regulations

AMERICAN BUREAU OF SHIPPING

Bulb flats, grades: A, B, AH32, AH36, DH32, DH36, AH acc. to ABS regulations

POLISH REGISTER OF SHIPS

Bulb flats in grades A, AH32, AH36
Round bars in grade A and steel grades acc. to EN 10025-2, EN 10083-1, EN 10084
Seamless forged-rolled rings in steel grade acc. to PN-H-84032, EN 10025-2, EN 10028-2, EN 10028-6, EN 10083-1
Certification of the Testing Laboratory according to Polish Register of Ships specifications

Approvals of classifying associations scope

TECHNICAL INSPECTION BUREAU

Manufacturing of bars, billets, sections and forged and rolled rings for technical installation construction and/or repair applications, subjected to technical inspection

Approval of the Testing Laboratory

RINA

Bulb flats in grades A, B, AH32, AH36, DH32, DH36

TÜV NORD ANLAGENTECHNIK

Approval of Huta Bankowa as a producer of semi-products according to directive 97/23/WE referring pressure equipment and AD 2000 W0 including: forged and rolled rings and hot-rolled round, bars made for ferritic materials and semi-products

INSTITUTIONS FOR RESEARCH AND CERTIFICATION "ZETOM"

Authorization for "CE" marking for round bars in dimension $\varnothing 90 \pm 250$ mm and equal-leg angles size $200 \times 200 \times 16 \pm 20$ mm according to EN 10025-2-3

QUALIFICATION CERTIFICATE OF SYSTEMS AND PRODUCTS TO BE USED IN POLISH STATE RAILWAYS

Rough railway wheel tyres for rail-vehicle wheel sets

PAŃSTWOWY SYSTEM CERTYFIKACJI UKR SEPRO

Rough railway wheel tyres for standard-gauge track wheel sets

REJESTR CERTYFIKACJI FEDERALNEGO TRANSPORTU KOLEJOWEGO ("RS FZT")

Rough railway for railway rolling stock





HUTA
BANKOWA



HUTA BANKOWA Sp. z o.o.
ul. Sobieskiego 24
PL 41-300 Dąbrowa Górnicza
tel.: +48 32 295 74 00
fax: +48 32 262 37 88

COMMERCIAL OFFICE
tel.: +48 32 295 74 05
fax: +48 32 295 76 13
e-mail: info@hutabankowa.pl
www.hutabankowa.pl

